



CITY OF CHASKA

PARKS AND TRAILS

DEPARTMENT OF PARKS AND RECREATION 952-448-3176 • DEPARTMENT OF PUBLIC WORKS 952-448-4335

COMMUNITY PARKS

- 1 G2 ATHLETIC PARK
725 WEST FIRST STREET
- 2 F3 CITY SQUARE PARK
300 CHESTNUT STREET
- 3 D2 COMMUNITY PARK
1151 HUNDERTMARK ROAD
- 4 F3 FIREMEN'S PARK I
260 HWY 212
- 5 E4 LIONS PARK
1300 CROSTOWN BLVD
- 6 C3 MCKNIGHT PARK
110400 PIONEER TRAIL
- 7 D5 PIONEER PARK
545 PIONEER TRAIL

NEIGHBORHOOD PARKS

- 8 B3 BAVARIA PARK
3141 BAVARIA HILLS TRAIL
- 9 D5 BLUFF PARK
11140 RIDGE BLUFF DRIVE
- 10 E3 COMMUNITY CENTER PARK
1661 PARK RIDGE DRIVE
- 11 C4 CORTINA WOODS PARK
315 SCHOOL ROAD
- 12 D4 EAST CREEK CANYON PARK
3018 CANYON ROAD
- 13 F4 FIREMEN'S PARK II
500 MAPLE STREET
- 14 D2 FRIENDSHIP PARK
850 HUNDERTMARK ROAD
- 15 D3 GRIEP PARK
317 GROVES DRIVE
- 16 G3 HICKORY PARK
120 HICKORY STREET
- 17 F3 HIGHLAND PARK
621 TUPELO WAY
- 18 C1 KELZER PARK
3025 HOLSTEIN ROAD
- 19 E3 MEADOW PARK
305 ENGLER BLVD
- 20 E5 RIVERVIEW PARK
183 RIVERVIEW ROAD
- 21 F4 SCHALOW PARK
865 MALLORY LANE
- 22 F3 SCHIMELPFENIG PARK
619 CREEK ROAD
- 23 C5 SHADOW WOOD PARK
2666 SHADOW WOOD DRIVE
- 24 C2 TOWN COURSE PARK
3000 TOWN COURSE DRIVE
- 25 G3 WINKEL PARK
220 PINE STREET SOUTH
- 26 D4 WOOD RIDGE PARK
685 AUGUST DRIVE

GOLF COURSES

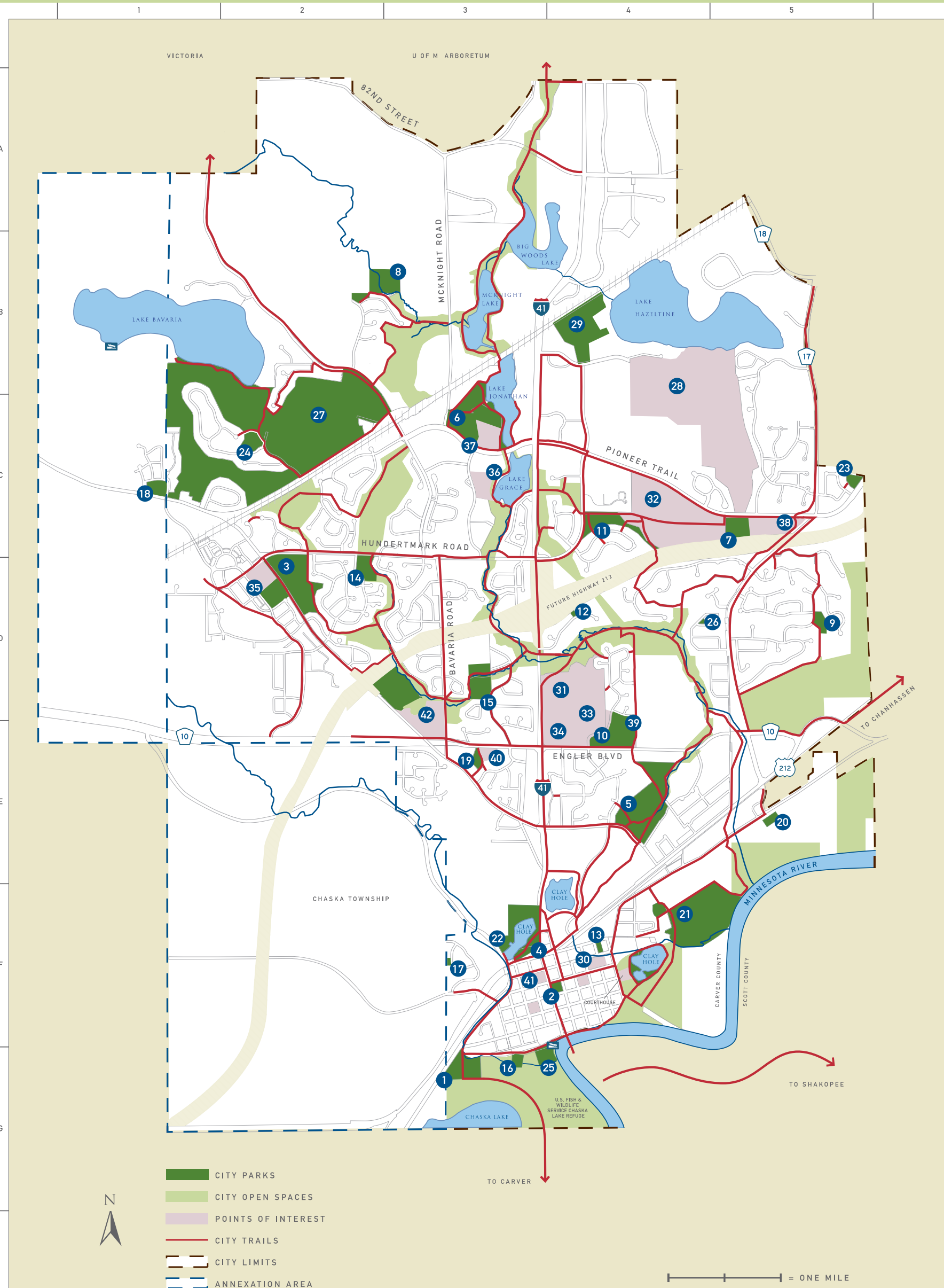
- 27 C2 CHASKA TOWN COURSE
3000 TOWN COURSE DRIVE
- 28 C4 HAZELTINE NATIONAL GOLF COURSE
1900 HAZELTINE BLVD
- 29 B4 PAR 30 GOLF COURSE
1207 HAZELTINE BLVD

SCHOOLS

- 30 F4 CARVER-SCOTT CO-OP
401 EAST FOURTH STREET
- 31 E4 CHASKA ELEMENTARY SCHOOL
1800 CHESTNUT STREET
- 32 C4 CHASKA HIGH SCHOOL
545 PIONEER TRAIL
- 33 E4 CHASKA MIDDLE SCHOOL EAST
1600 PARK RIDGE DRIVE
- 34 E4 CHASKA MIDDLE SCHOOL WEST
140 ENGLER BLVD
- 35 D2 CLOVER RIDGE ELEMENTARY SCHOOL
114000 HUNDERTMARK ROAD
- 36 C3 EARLY CHILDHOOD CENTER
110600 VILLAGE ROAD
- 37 C3 JONATHAN ELEMENTARY SCHOOL
110300 PIONEER TRAIL
- 38 C5 PIONEER RIDGE FRESHMAN CENTER
1085 PIONEER TRAIL

CITY BUILDINGS

- 39 E4 CHASKA COMMUNITY CENTER
1661 PARK RIDGE DRIVE
- 40 E3 CHASKA FIRE STATION
285 ENGLER BLVD
- 41 F3 CITY HALL
#1 CITY HALL PLAZA
- 42 E3 MUNICIPAL SERVICES
660 VICTORIA DRIVE



- CITY PARKS
- CITY OPEN SPACES
- POINTS OF INTEREST
- CITY TRAILS
- CITY LIMITS
- ANNEXATION AREA

— = ONE MILE